

# Berkshire Gardens Trust



We have great pleasure in welcoming  
you to our afternoon tea and garden tours  
to celebrate our 10th anniversary

**TUESDAY 16TH JULY 2019, 2PM**

**THE LONG GALLERY, ENGLEFIELD HOUSE,  
THEALE, BERKSHIRE RG7 5DU**

---

*Celebrating 10 years*

# PROGRAMME FOR THE AFTERNOON

---

## 14:00 - Welcome

Janet Fuller, BGT Vice Chairman and Membership Secretary

## Review of Berkshire Gardens Trust 2009 – 2019

Dr Christina Hill Williams, DL President of BGT

## Afternoon tea is served

Cucumber, Egg & Cress and Smoked Salmon Sandwiches  
Scones, Jam & Cream  
Selection of Homemade cakes:  
Coffee cake; Lemon Drizzle cake;  
Country Fruit cake and Flapjacks  
Choice of tea or coffee

## Looking to the future

Charles Elly, DL, Chairman of BGT

## A toast to the future of the Berkshire Gardens Trust

Proposed by Charles Elly

## Formal group photographs and informal shots taken in the gardens

\*Photographs will be taken during the afternoon. If you do not want your photo included, please inform Alison Mihail or Helen Parvin or the photographer\*

Touring around the Englefield Estate Gardens at your leisure

## 17:30 - Guests depart

## 18:00 - Gates close



---

## DR CHRISTINA HILL WILLIAMS

DL MA FRGS FRSA

### President, Berkshire Gardens Trust and Co-founder

Today marks a major success. From extremely modest beginnings, Berkshire Gardens Trust has made a substantial contribution to the culture and environment of this county.

The Trust, formally launched here in July 2009, was actually founded in 2008, when four enthusiasts met to discuss establishing the organisation.

The omens were not promising: Berkshire County Council had been abolished in 1998 and replaced with six unitary authorities, raising questions concerning confidence, county identity, and the practicality of cross-unitary organisations. We had no resources other than our own enthusiasm and energy.

So much has been achieved since 2009: the Gazetteer, lectures, visits, the Award Scheme to encourage good civic initiatives, and our Planning work. Creating the William and Mary revival garden at Watlington House in Reading is a major success. In celebrating these achievements, our thanks go to all who have contributed; we look with pride to the future, and the continuing success of the "the last piece of the jigsaw".



---

## HIS HON CHARLES ELLY

DL

### Chairman

It is a great pleasure to welcome you to the 10th Anniversary Celebration of the Berkshire Gardens Trust. We are delighted to be able to hold this at Englefield House, by kind permission of Mr and Mrs Richard Benyon. As the Trust was finally launched at the Long Gallery in July 2009, this is the most appropriate place for our celebration.

We are grateful to all who have lectured, led visits and made their homes and gardens available for us to visit over the past ten years. We hope to continue this programme in the future.

The main purpose of the Trust is to ensure that future generations have the same opportunity to enjoy Parks and Gardens as we have had. So we continue to examine planning applications which affect parks and gardens which have an historic or contemporary significance. Our comments are directed to ensure that where possible the significant features are preserved, whilst acknowledging the need for housing in appropriate places.



# GAZETTEER

The list of locally interesting historic parks and gardens in Berkshire is an important aspect of the Berkshire Gardens Trust. Progress is being made in understanding their history and how much survives.



A typical snapshot of part of Berkshire showing the extensive spread of nationally important and local parks and gardens across the County.



**Bedham Valance:** Trustees looked around the estate at the invitation of the then owner. Ben, Gaila and Charles stand outside the gates at the western end of the park off the A4. These gates originally came from the nearby Hampstead Marshall estate. Researched by Trustees.



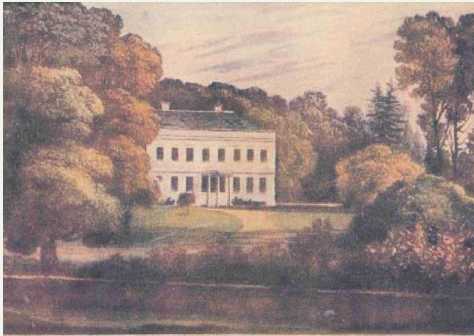
**Bedham Valance:** This image of the house looking over Capability Brown landscape is from the report prepared by Sutton Griffiths in 1913, before work started on restoring the parkland.



TABLE OF PARKS AND GARDENS WITHIN BERKSHIRE (2013)

Number of properties	% of the total	Priority
27	12%	<b>P1</b> – Properties that may be of historic importance or have associated with them a modern garden designer or a person of either national or local (to Berkshire) importance, or gardens that represent a particular style: of particular interest
23	11%	<b>P2</b> – Modern gardens that do not meet the Priority 1 criteria but may have design merit: worth investigating
23	11%	<b>P3</b> - Historic England Registered Park or Garden
12	6%	<b>P4</b> – Public, designed, open spaces such as municipal parks that do not fall into priority 1, 2 or 3.
30	14%	<b>P5</b> – Some interest but not enough information to be able to categorise
102	46%	Other categories with little interest or otherwise discounted
<b>217</b>	<b>100</b>	<b>Totals</b>

Of the initial 220 properties, some 115 were found to be worth investigating further. Of these only 11% currently have any protection as Historic England Registered Parks and Gardens. BGT research will help to protect the remainder.



**Midgham Park:** Published image of engraving of 18th century house (now demolished). The estate, although fragmented, survives with many of the original parkland landscape features including the woodlands, parkland views, estate walls and tree avenues.



**Midgham Park:** Modern view from public footpath across the parkland estate. The estate was visited in 2012 by using publicly accessible paths and the surrounding road network. Researched by Trustees.



**Elcot Park** is now a hotel but still retains some of its parkland features. Researched by Janet Fuller.



**Padworth College:** This plan shows the location of the key historic features of the parkland: 1: Pleasure Garden; 2: Terrace; 3: Walled Kitchen Gardens; and 4: Fisherman's Lodge. Researched by Ben Viljoen.

# MAJOR EVENTS

Examples of major events that we have organised to share what we know about our heritage, provide guidance on good practice and to formally launch the Trust in 2009.



Inaugural Event in July 2009. Group photograph of our distinguished guests and Trustees on the lawn outside Englefield House.



Hall Place dates back to at least 1234 and is in part included on the national Register of Parks and Gardens. The current main building was erected between 1728 and 1735, by William East, although aspects of the parkland pre-date this early Georgian mansion.



Study Day at Purley Hall. View from the Grotto down Charles Bridgeman's canal to Purley Hall.

## Landscape Institute South East



### SOUTH HILL PARK, BRACKNELL:

#### JOINT VISIT TO THE HERITAGE LOTTERY FUNDED RESTORATION OF THE PARK AND GARDEN

24 SEPTEMBER 2011



The Berkshire Garden Trust and the Landscape Institute South East invite you to join us on our early Autumn visit, planned to coincide with the final stages of the restoration of the historic park and gardens at South Hill Park. We hope that you will come and enjoy the programme for the day.

**12.30pm** Arrive at South Hill Park – Garden Room

**12.30 – 1.15pm** Buffet lunch in the Garden Room to be provided by Members of Berkshire Gardens Trust. Drinks will be available from the South Hill Centre Bar

**1.15 – 2.30pm** Talks in the Garden Room:

1. Clive Williams, CBE (Author of *The Nabobs of Berkshire*) on the history of the house
2. Presentation on the history of the park and garden (speaker to be confirmed)
3. Richard Walton, Parks and Countryside Manager (Bracknell Forest Council) on the Restoration Scheme and Heritage Lottery Funding
4. Dave Adams (Gavin Jones), landscape contractors, with an introduction to the restoration works

**2.30 – 4.00pm** Guided tour of the restoration works at South Hill Park

**4.00pm on** Tea in the café and optional visit to the art exhibitions

Joint day event with the Landscape Institute on the restoration of South Hill Park. Flier sent out to members for this event.





Workshop on the Setting of Historic Assets. Our President addresses the attendees at Hall Place, Burchett's Green on the events for the day. She is joined at the table by Gilly Drummond OBE DL President of The Gardens Trust at the time, and Steffie Shields MBE professional garden photographer, writer, and historic landscape consultant.



A group takes a guided tour of the parkland estate at Caversham Park. A view of the main south elevation of the Mansion: 'a handsome if conventional High Renaissance exercise in Bath stone, similar stylistically to Cliveden'.



Study days at Caversham Park, part of Capability Brown 300 celebrations. Early view of Caversham Park from the south.



Invited guests and new members enjoy the presentations in the lovely Long Gallery at Englefield House.



## GARDENS VISITED

---

We have had a very full programme of special garden visits over the last ten years. The following are just a small selection from across Berkshire itself. Excellent teas all round!



Private garden, East Berkshire. By special arrangement our most recent trip to visit the restored and new gardens of a private house.



Eton College, Eton. A special afternoon visit to several gardens with a guided tour by the Head Gardener arranged by old Etonian Richard Griffiths-Jones.



Ingle Spring, Stanford Dingley. Indra and David Townsend welcomed us to their beautiful garden.



Rooksnest, Lambourn Woodlands. By special arrangement a private visit to these lovely gardens with a tour by the Head Gardener.



Waltham Place, Waltham St Lawrence. Members enjoy our very first garden visit to the lovely gardens owned by Strilli Oppenheimer in 2009 with a tour by the Head Gardener.



Woolley Park, West Berkshire. Garden afternoon by kind invitation of Sir Philip and Lady Wroughton who are pictured with member Ben Viljoen in the gardens.



Savill Gardens, Windsor Great Park. A guided private tour by the Head Gardener followed by a picnic.



Newbold College (formerly Moor Close) Binfield, Bracknell. BGT members enjoy a guided tour of the Registered Park and Garden led by Harry Leonard, a retired lecturer at the College.



## 2007/8

- The seeds of Berkshire Gardens Trust are sown by Fiona Hope, Christina Hill Williams, Ben Viljoen and Liz Ware.
- An informal, inaugural spring meeting is hosted at Basildon Park, bringing together all the local authorities, officers and councillor/ heritage leads, and as many owners and openers as we could muster, and as many enthusiasts as possible.
- A second meeting at Basildon Park established the Trust and elected its officers: Chairman Christina Hill Williams; Honorary Secretary Fiona Hope and Treasurer Ben Viljoen; and an embryonic Committee.
- First BGT visit to Waltham Place near Twyford, for an early autumn tour by our hostess, Mrs. Strilli Oppenheimer.

## 2010

- MERL host BGT's inaugural research group event, followed by a visit to the BRO.
- Spring Lecture What is a Gertrude Jekyll Garden by Richard Bisgrove, author and garden historian at Purley Barn.
- Woolley Park summer garden and tea event by kind invitation of Sir Philip and Lady Wroughton.
- BGT's first AGM and Lecture on Basildon Park with a lecture by Tim Martin, Head Gardener.
- BGT attends Berkshire Heritage event at Wokingham with display.

## 2012

- Spring Lecture Strawberry Hill, A Magical Place by Chris Sumner, former Chair of London Parks & Gardens Trust.
- Summer Afternoon at three West Berkshire Gardens at Honeycroft House, Ingle Spring and Well House, Upper Basildon with tea.
- Guided tour of the Grade II registered gardens at Newbold College near Bracknell, by Harry Leonard, retired college lecturer.
- Autumn Lecture Sanctify, Vice & Virtue: A Talk on Purley Hall by Ben Viljoen at Purley Barn.
- Hungerford Tragedy Memorial Garden Renewal Event following project involving BGT members led by Bettina Kirkham, BGT Trustee.
- Restoration design work for the Watlington House gardens starts under the auspices of the Watlington House Trust with Gaila Adair as garden designer and support from BGT.

## 2009

- First Spring Lecture on Humphry Repton in Berkshire by founder member Ben Viljoen at Purley Barn.
- BGT's formal launch and summer tea at Englefield House & Gardens at which Lady Wroughton is acclaimed as the first President.
- BGT promotional stand at West Woodhay's Spring Fair.
- Ben Viljoen contributes to MERL's Grow Your Own exhibition on behalf of BGT.
- BGT starts responding to Planning Applications.
- Initial gathering of a potential of 220 gardens for inclusion in the Depository by reference to published sources, led by Ben Viljoen.

## 2011

- Spring Lecture on The Origin of Plants by Michael Keith-Lucas at Purley Barn.
- Guided spring tour by Head Gardener of the Valley Gardens, Windsor Great Park.
- The Chairman's Awards for innovative civic and educational gardening projects, instigated by Christina Hill Williams, Chairman.
- AGM with a lecture by Veronica McCaig, representing the Association of Gardens Trusts and an introduction to Watlington House by Clive Williams, WH Trustee Secretary, and Gaila Adair, BGT Trustee at Watlington House, Reading.
- Discussions with English Heritage (now Historic England) resulting in a 3 year Capacity Funding grant for BGT.

## 2013

- Spring Study Day exploring The Setting of Historical Assets for planning applications with attendees from BGT committee, Berkshire planning professionals and English Heritage at Hall Place, Berkshire College of Agriculture.
- BGT's Research Group Summer Garden Visit to Folly Farm, Sulhamstead, for guided tour by the Estate Manager of the gardens including interpretations by Dan Pearson, Garden Designer.
- AGM and presentation by Gaila Adair on proposals to recreate gardens behind Watlington House at Watlington House, Reading.
- Autumn Lecture on The Chelsea Fringe by Tim Richardson, journalist and author involved with the Garden History Society.



# 2014

- Spring Lecture on The Restoration of Upton Grey Gardens by Rosamund Wallinger, owner and author, at Purley Barn.
- Summer Garden visit to Upton Grey Gardens, Hampshire, with introduction by Rosamund Wallinger.
- AGM and Lecture on Remodelling Historic Parks for Contemporary Uses by Hal Moggeridge, Landscape Architect at Purley Barn.
- Members of BGT help to plant up the gardens at Watlington House.

# 2016

- Spring Lecture on Lancelot 'Capability' Brown in Berkshire, by Ben Viljoen at Purley Barn.
- Guided tours of Caversham Park, a Brownian landscape, by kind permission of the BBC. Ben Viljoen gave introductory talks and published a booklet called Lancelot Brown & the Landscape of Caversham Park.
- Spring visit with guided Tour of Rousham, Oxfordshire (a Grade II\* registered landscape) by Ben Viljoen.
- Summer visit to Eton College Gardens (Grade II registered landscape) for a tour by the Head Gardener and team.
- Ben Viljoen's Capability Brown in Berkshire exhibition at Caversham Court Gardens and Newbury Library and talk at Newbury Library.
- AGM and Lecture on Harcourt Arboretum by Timothy Walker, retired Director of the Oxford Botanic Garden and Harcourt Arboretum.

# 2018

- Spring Lecture on Humphry Repton and Purley Park by Ben Viljoen and the launch of his book The Purley Red Book: A few days in the lives of Anthony Morris Storer and Humphrey Repton.
- Launch of new BGT website.
- Informal launch of BGT promotional drive with inaugural presentation and 'brainstorming' meeting at Upper Basildon.
- Summer Visit to Rooksnest, West Berkshire with introduction from Head Gardener.
- Summer Visit to Buscot Park, Faringdon, for guided tour by Estate Curator.
- AGM and Autumn Lecture on Folly Farm by Simon Goodenough, Estate Manager.

# 2015

- Spring Lecture at Shaw House, Newbury, on Gardens of the Tudor & Stuart Period: The Start of the Renaissance Garden in England by Kate Harwood, Garden Historian and Lecturer from Hertfordshire County Gardens Trust.
- Spring Visit to West Green House Gardens, Hampshire with guided tour by Marilyn Abbott, owner under lease from the National Trust.
- Members' visit to Folly Farm for guided tour by Estate Manager.
- Summer event at Watlington House for the Geoff Hill Memorial Gardens Launch, hosted by Watlington House Trustees.
- AGM with Autumn Lecture Rousham: The Birth of the Pictorial Circuit by Michael Symes, Garden History Author, at Purley Barn.
- Completion of the assessment of the 220 Berkshire properties that had been identified as being potentially of interest to the Trust under Ben Viljoen's guidance. An initial assessment reduced the number from 220 to 141 and prioritised them for further research.
- Launch of the Gardens Trust, following the merger of the Association of Gardens Trusts and The Gardens History Society at Newcastle.

# 2017

- Spring Lecture on Kensington Gardens & Brompton Cemetery by Andy Williams, Royal Gardens Head Gardener.
- Spring guided tour of Harcourt Arboretum by Ben Jones, Curator.
- Ben Viljoen's Capability Brown in Berkshire exhibition and talk at Berkshire Records Office.
- Autumn visit to Brompton Cemetery for guided tour by Andy Williams and The Garden Museum, Lambeth Palace, with introduction by Christopher Woodward, Director.
- BGT contributes to the House of Lords consultation about Public Parks.
- AGM and Autumn Lecture, William Robinson: 'The Wild Gardener' by Richard Bisgrove at Purley Barn.

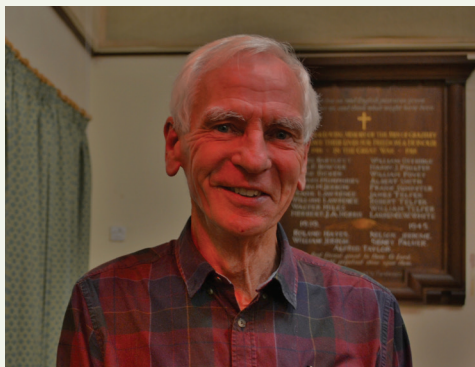
# 2019

- Spring lecture on The Art of Deception in the 17th Century Garden by David Marsh, Chair Education Committee of the Gardens Trust.
- Short initial list of potential local parks and gardens of historic interest shared with Wokingham District Council.
- Spring visit to a private East Berkshire Garden with afternoon tea.
- Early summer visits to Folly Farm, Hampshire with Simon Goodenough, Estate Manager.

# TALKS

---

We have had a very full programme of varied and stimulating talks from a wide spectrum of experts in their field. Always entertaining these talks have expanded our understanding of designed parks and gardens. The following are a small sample showing which followed up by a visit.



'The Wild Gardener'. Richard Bisgrove, retired Course Director in Landscape Management at the University of Reading, talks about William Robinson, the Victorian horticulturalist, and his innovative use of native plants in contrast to formal Victorian bedding schemes and the incorporation of non-native exotic shrubs and plants in our parks and gardens.



Exploring Kensington Gardens & Brompton Cemetery. Andy Williams (right), Park Manager for Kensington Gardens and the Brompton Cemetery, talks to BGT about two very different sites, describing some of the contemporary challenges and revealing some of the opportunities currently being progressed.



'The Art of Deception in the 17th Century Garden'. David Marsh, Chairman of the Education Committee of the Gardens Trust and lecturer explains how every age has ways of using tricks to deceive people into believing something is real when it's not. Everything is possible if you believe John Evelyn.



'Gertrude Jekyll: Her Art and Place in Garden History'. In 1983 Rosamund Wallinger and her husband purchased The Manor House at Upton Grey. This was the start of a lifelong devotion to Miss Jekyll and the garden at Upton Grey, the most authentic of the extant Jekyll gardens. Rosamund talks about her garden's history.



**Above:** ‘The Start of the Renaissance Garden in England?’ An illustrated talk on late Tudor and early Stuart Gardens by Kate Harwood Garden History lecturer from Hertfordshire Gardens Trust held at Shaw House in Newbury.



**Left:** ‘Remodelling Historic Parks for Contemporary Uses’. Hal Moggeridge, landscape architect and Past President of the Landscape Institute, talks about following in the footsteps of Capability Brown in the modern day: ‘the art of capturing the spirit of the place and visualizing its capabilities, relying on great experience, passion and talent to know and feel what’s right for a place, and tying together architecture, setting and space’.



“Folly Farm: A Restoration – Lutyens and Jekyll Re-imagined”. Simon Goodenough, the Estate Manager for Folly Farm, gave a very well-illustrated talk about the evolution of the gardens at Folly Farm and the influence of Gertrude Jekyll and recently Dan Pearson.



‘Lancelot Brown and Caversham Park’. In one of many presentations to BGT given by Ben Viljeon, Founder Member of BGT, researcher and lecturer, Ben gave us a talk on Lancelot ‘Capability’ Brown, the father of English landscape gardening’s involvement in the evolution of the park and gardens of Caversham Park.



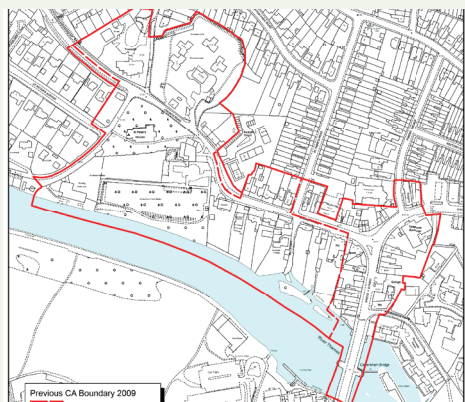
# PLANNING

Berkshire Gardens Trust have submitted comments on in excess of 60 cases, involving planning applications, local plans, neighbourhood plans, landscape character assessments and proposed Conservation Areas.

The following are a few examples:



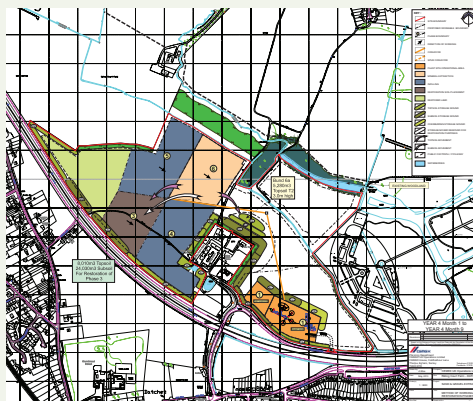
Aldermaston Park, Aldermaston. Draft plan for major redevelopment of this Registered Park and Garden, including a large housing scheme in the former Deer Park. BGT raised considerable concerns. Scheme withdrawn for now.



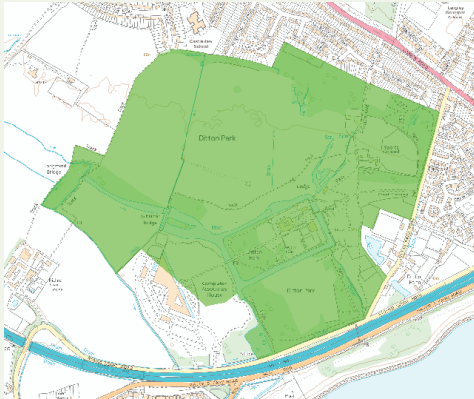
Caversham Conservation Area. Proposals to extend the Conservation Area and include the setting of the River Thames. Caversham Court lies at the core of the Area. BGT gave their support to the proposals.



Caversham Conservation Area. View from Caversham Bridge over the River Thames to the gazebo at Caversham Court.



Ditton Park, Langley, Slough. Map of the extent of the Registered Park and Garden to the east of Slough. The park dates from before 1086, although the present grounds were laid out in the 18th century by Lancelot Brown.



Ditton Park, Langley, Slough. Proposals for major gravel extraction which extended up into the Registered Park and Garden. BGT raised concerns and some measures to protect the park were eventually included in the planning permission.



Palmer Park, East Reading. Proposals for a major upgrade to this park and the provision of a new swimming pool. The Victorian park was designed as a recreation area within a parkland setting, much of which survives. BGT asked for more account to be taken of the historic parkland features.

## Case Study: Sandeford Priory Views in 1744 and today



Edward Hayley's Portrait of the Montagu family c1744. Reproduced from en.wikipedia <https://commons.wikimedia.org/w/index.php?curid=47579682>



Sandeford Park, Newbury. The park and garden by Lancelot Brown for Elizabeth Montague. Views from the house are of particular value. BGT submitted comments throughout the planning process to ensure that the historic views were protected.



Sandeford Park, Newbury. The proposals for a large strategic housing site at Sandeford lies within the setting of Sandeford Park, a Registered Park and Garden and includes part of the wider estate. A Country Park is proposed on much of the wider estate.

# COMMUNITY PROJECTS

---

We have worked to promote the value of gardens, horticulture and garden design through various projects with other organisations and community groups. Here are some examples:



Hungerford Memorial Garden, Hungerford. The Trustees on completing the planting up of the new garden, with the help of the Community Payback Team and local residents.



Watlington House, Reading garden restoration. Members of both BGT and Watlington House Trust attend the opening of the Geoff Hill Memorial Gardens in 2015.



Watlington House, Reading garden restoration. The gorgeous William and Mary house stands proudly at the end of the new garden.



Watlington House, Reading garden restoration. Watlington House Geoff Hill Memorial Gardens in full late spring bloom.





Tidmarsh Millennium Green, Pangbourne. The photograph shows part of the newly created wild flower meadow, prepared and seeded by the local community. Awarded 'Highly Commended'.



Pavilions Border Community Gardeners, Wokingham. The Mayor of Wokingham receives the Award for an 'Outstanding' garden in 2015 from James Puxley, Lord Lieutenant of the Royal County of Berkshire.

# THE GARDENS TRUST

---

Berkshire Gardens Trust is one of 36 County Gardens Trusts across the country.

The Gardens Trust is our national 'umbrella body' and provides us with invaluable advice and support in developing our objectives. Many of the staff have been closely involved in Berkshire Gardens Trust and we have a close relationship with them. The Gardens Trust also publishes a very good newsletter with interesting articles and stages many events across the country. Fiona Hope is our representative at The Gardens Trust.

## WHAT CAN YOU DO TO HELP US?

---

We always welcome new members as Trustees and onto the Committee; and other offers of help.

We would also welcome suggestions from you:

- Can you recommend any historical gardens or not able restorations and modern adaptations that we might visit, within an hour's drive from Berkshire?
- Are you aware of any planning applications that affect our parks and gardens and do you think BGT might be interested in and can help with?
- Do you belong to or are aware of other organisations with similar goals to ours?
- Do you know of any speakers you would like to recommend?

Please contact us at  
[www.berkshiregardenstrust.org](http://www.berkshiregardenstrust.org)  
or email [bgtmembership@gmail.com](mailto:bgtmembership@gmail.com)



**COBBS**  
— AT ENGLEFIELD —  
**FARM SHOP & KITCHEN**

"Cobbs are pleased to support the Berkshire Gardens Trust on their 10th anniversary"

**FARM SHOP • CAFÉ • BUTCHERY • DELICATESSEN • FLORIST**

**OPEN 7 DAYS A WEEK**  
Monday to Saturday 9am - 6pm  
Sunday 10am - 5pm  
Cafe closes one hour earlier than the shop

Cobbs at Englefield, Wickcroft Farm, Pangbourne Road,  
Theale, Reading, Berkshire, RG7 5EA  
T 0118 9304 064 E [cobbs@cobbsatenglefield.co.uk](mailto:cobbs@cobbsatenglefield.co.uk)

[WWW.COBBSFARMSHOPS.CO.UK](http://WWW.COBBSFARMSHOPS.CO.UK)



# ENGLEFIELD HOUSE

---

*'If you help towards Englefield garden either  
in flowers or invention you shall be welcome thither'.*

This inscription written in a letter in 1601 demonstrates that a garden at Englefield was being planned four 'hundred years ago. The house has remained in the Paulet family since 1635, is listed at Grade II\* and the superb gardens are Grade II listed on the Historic Parks & Gardens Register. The country house is surrounded by 19th and 20th century formal and woodland gardens within an 18th and 19th landscape park, set in the Estate's extensive woodlands.

Of note are the 1850s stone balustrades and staircases. Much of the original planting is still in place and this includes varieties of rhododendron, azalea, camellia, magnolia, hamamelis, parrotia, cornus, davidia and acer. Recent features include: the Ivy house, the grotto with its fir cone-studded interior, the bear, the round pebble garden, a yellow and blue garden enclosed in clipped yew, the kitchen garden plus a fountain and rill. The views out to the countryside are spectacular.





# ACKNOWLEDGEMENTS

---

The BGT trustees would like to thank the following for their generous support:

The Right Honourable Richard Benyon and Mrs Benyon for their permission to hold our celebration in the Long Gallery, Englefield House.

Peter Carson and Sarah Mosby, the Englefield Estate, for their support with the organisation of our celebration.

Tom Newey, Cobbs Farm Co Ltd, for the extremely kind donation of their own English sparkling wine: 2013 Classic Cuvee, from the Alder Ridge vineyard, Hungerford, so we can toast Berkshire Gardens Trust drinking English sparkling wine!

Matt Smith, Loxley Arts, for the loan of the easels which enhance our display, illustrating ten years of Berkshire Gardens Trust.

Fiona Sale, Catering Needs, for the delicious afternoon tea.

Russ Keyte and Emily Woffindin from 418 group, for their technical advice and guidance with the production of the programme.

David Probert and Tony Bates from Whitchurch Camera Club for giving their time to record images of the day.

Bettina Kirkham, Helen Parvin and Alison Mihail for their organisation of the celebration.

## **And finally...**

Our many guests, who have supported us over the past decade and, we hope, will continue to encourage us in our work, ensuring that the historic gardens of Berkshire are preserved for the benefit of future generations.

We would also like to warmly remember members and close friends of the Trust who have sadly passed away: Susan Balchin, Mary Bayliss, Richard Griffith-Jones, Rosemary Simon and Sabrina Sutherland.

Photographs for the commemorative programme are sourced from members of the Berkshire Gardens Trust and from planning application documents.

✉ [www.berkshiregardenstrust.org](http://www.berkshiregardenstrust.org)

💻 [bgtmembership@gmail.com](mailto:bgtmembership@gmail.com)

